

VR-ROLLER

Compaction, leveling & cultivation



VOMER
your farming equipment

“It all starts with a Good Preparation of the Land”

A good harvest begins with a good soil preparation, at Vomer we have been designing and manufacturing tillage equipment with the same passion as the first day, over 40 years, evolving from traditional work to new trends in mini-tillage.

Currently the Vomer brand is a benchmark in soil preparation and we work every day to maintain the levels of performance and reliability that the farmer demands.

“Technology and Design Capability”

The new sustainable agriculture requires new technologies, new developments and energy savings. At Vomer we put all our knowledge acquired in our history at the service of the farmer.

Our technological capacity and innovation are reflected in designs and solutions that are separated in many cases from the market standard. Designs that seek a higher yield and a greater added value to the product, which the farmer can appreciate from the first moment.

The work of the design department is completed with the construction of prototypes, which provide us with valuable data on the work capacity and behavior of our teams before marketing. In this way we can

ensure satisfactory final results.

The joint work with experienced farmers, helps us to know the user experience, concerns and needs, forming the most important pillar in the development of our products.

With the introduction of the VomerDemo program, in which farmers can test new models, we can collect data on usability, wear, maintenance, etc ...

“Quality and Reliability”

Each tillage equipment that leaves our factory must be a representation of the Quality and Reliability associated with the brand, so the manufacturing process must adapt to these demands, meeting the required quality standards. Every Vomer tillage equipment should be an exponent of our commitment to the farmer.





The roller has been traditionally used to compact and consolidate the terrain making the seed have a good contact with the soil, and the optimal conditions for growing. Moreover, the roller allows to cover the rocks, so that it doesn't cause problems to the seeders. However, the rollers can make much more than this, because with the right equipment they can work as surface sowers, breaking the superficial crust and leveling the furrows of previous works.

Ground cultivation with the roller
Breaking of soil blocks and levelling of the ground after previous works are two of the main tasks of the roller. If additional compaction or consolidation is needed, Vomer had three models with greater weigh by meter. Dragging a Cambridge smooth or raptor Vomer roller combines both efficient levelling and cultivation, equally important on spring or autumn. Vomer Cambridge models also give the roller the capability of self-cleaning, which makes it usable when the soil is humid and loose, or after working with discs or the sower.

Breaking of superficial crust
When periods of rain come between the sowing and germination of the seed, a superficial crust is built that could completely compromise the cultivation, same process as in winter frosts. In those circumstances it is necessary to act against that crust, with a tool that is capable of breaking it without damaging the crops. The use of the Cambridge Vomer roller could be the solution to that problem. When the crust is harder, the VR-ROLLER Vomer Raptor will be the more efficient equipment. Thanks to the extra weight and the more aggressive profile these breaking of the crust will be efficient.

Roller used in spring after the sowing
Vomer rollers used after sowing create optimal conditions for the germination of the seed. The rocks are pushed down and the ground surface is uniform.

Roller used in spring for autumn cultivations
The winter frosts on crops cultivated on autumn have the ability of creating a superficial crust, which reduces the contact between the roots and the surface. Vomer Cambridge or Raptor rollers compact the terrain, breaking the crust and allowing the contact between the root and the surface for optimal development.

Roller used on oleaginous seeds in spring and colza in autumn
Vomer Roller used after sowing guarantee that the oleaginous and colza seeds have a better contact with the soil, allowing after just one passing one of the best conditions for germination of said seeds.



630 25" Cambridge
OSCILLANTING RING



7 to 11m
Working Width

- + Durability
- + Reliability
- + Performance

VR-ROLLER

Capability

Great Work Capacity

Premium range roller, intended for the toughest and most demanding jobs. The VR-ROLLER roller with working widths from 7 to 11 meters is characterized by a uniform weight distribution and adaptation to the terrain. It also offers a high level of consolidation and compaction, hardly comparable.

The large diameter of the discs / rollers improves the rolling effect, being less sensitive to weight, so the power requirements are lower, being able to work at a higher speed.

In the field, the rear position of the wheels provides great maneuverability on small farms, and allows to relieve the weight of the roller in light / soft areas.

Performance

Unique Design

The design of the VR-Roller is unique in several respects. The most visible part is a monocoque central frame, unique in its class, very strong, and which integrates all the elements, but there is much more. The hydraulic opening system brings the roller closer to the tractor and makes it more manageable, and no hydraulic element supports load in the field. In transport everything is an advantage, the center of gravity is low, and the weight is centered, so the tractor does not support a large weight. Central wheels provide maneuverability

Reliability

Made to Measure Professional Farmer

Like all Vomer equipment, the VR-ROLLER roller is made of high-strength steels and incorporates highly reliable components, minimizing adjustments and maintenance. High capacity sealed bearings provide the security of continuous work without breakage. The high quality cast steel of the discs frees us from breakage even on stony ground and in turn reduces wear.

VR

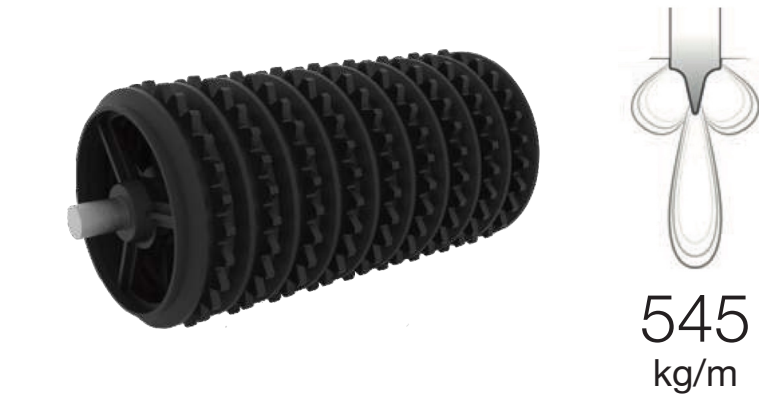
A ROLLER FOR EVERY WORK

COMPACTION AND LONGITUDINAL CULTIVATION



CAMBRIDGE Ø530 *
Compactor disc with oscillating rings with a great consolidation and compacting capacity. The trapezoidal disc compacts concentrating all of its weight in the tip, and also acts as a guide, while the dented ring gives the roller some sowing ability in certain terrains, as well as being a cleaning element.

Central axis in Ø70 mm, oscillating bearings and individual adjusting system. From 9,00m the lateral sides are mounted with central support.



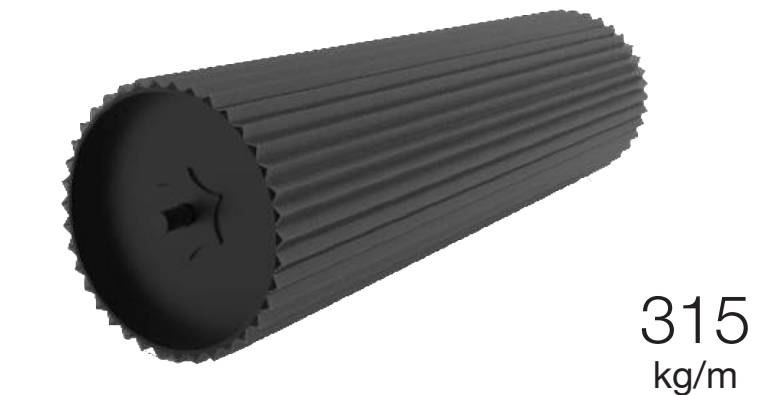
CAMBRIDGE Ø630
Compacting discs in Ø630 with oscillating ring for heavy terrains in autumn labour, and where an extra effect of consolidation is needed, thanks to the extra 125kgs of added weight compared to the standard model. These discs have a greater roll power, which translates in less pulling effect and less fuel consumption.
Central axis Ø70 mm, high capacity bearings and individual adjustment system incorporated. From 8,00m the lateral sides are mounted with central support..

CROSS COMPACTION



FLAT Ø750
The flat road roller in Ø750 is used for growing crops, after the sowing of the alfalfa, fodder and cereal, and its also used in other labour during autumn or spring. As it doesn't have the cultivation capability, this type of roller is highly appropriate for rock terrains, as their smooth surface covers the rocks and decreases the risk of damages. These rollers have a higher rolling capacity, decrease of dragging effect and a decrease on fuel consumption.
This type of rollers offers the possibility of changing the total weight allowing the filling of the internal part of water (up to 1/3). The round tube is built on high durability steel in 12mm thickness, with an axis of Ø60mm (Ø70mm from 10,00m) and wheel on oscillating bearings of high capacity.

COMPACTION AND CROSS CULTIVATION



RAPTOR Ø750
Compactor roller with flat tube in Ø650mm and a longitudinal groove of angular type. With external diameter of 750mm, this roller is suitable for heavy consolidation and cultivation tasks. The aggressive profile is optimal for breaking and movement of the superficial terrain, and it merely damages the plant when it is used after the cultivation process. As the weight is superior to all the other models of flat tube, it is also recommended for extra consolidation work.



SHOX TECHNOLOGY
Exclusive technology developed by Vomer, that uses the energy of a spring strategically located, to equally distribute the pressure of the roller on the terrain. SHOX works along with the oscillating system and allows to individually adjust the equilibrium of each part of the roller.

*Serie Equipment



TRACK ERADICATOR's
Front track cleaning system of hidraulic activation that decreases the effect of the tractor track before the roller. It is purely hidraulic which allows for a variation of the depth work. On cultivated terrains it must be put on the highest position. The leaf spring tines minimize the damage and allow for higher performance.

*Optional Equipment



STONE BOX
Box for the collection of stones that are sometimes found in the field and that due to their size it is convenient to remove it. The stone boxes placed in the lateral sections, incorporate a simple tilting system that make the extraction of the stones more easy.

*Optional Equipment

TECHNOLOGY VR

In every reconsolidation works it is important that all the terrain receives the same compaction effort so that all have the same growth condition. To achieve this, the Vomer VR.ROLLER has been designed with a weight distribution that has oscillating parts and guarantees optimal adaptation to the terrain.

OSCILATING SYSTEM

The roller is divided in 3 sections, which oscillate independently. This configuration achieves a continuous compaction, avoiding the scalling of other systems. The lateral sections incorporate a horizontal oscillating axis displaced from the central position. The central section oscillates vertically and horizontally, which guarantees the best contact with the terrain and avoids possible dragging.

All the elements of the system are manufactured in high durability steel and require low maintenance.

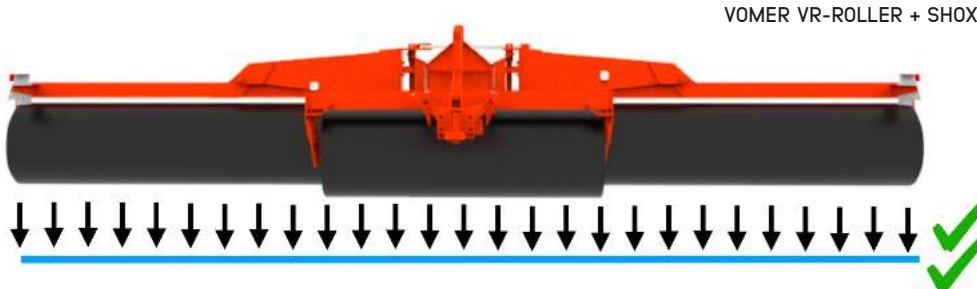
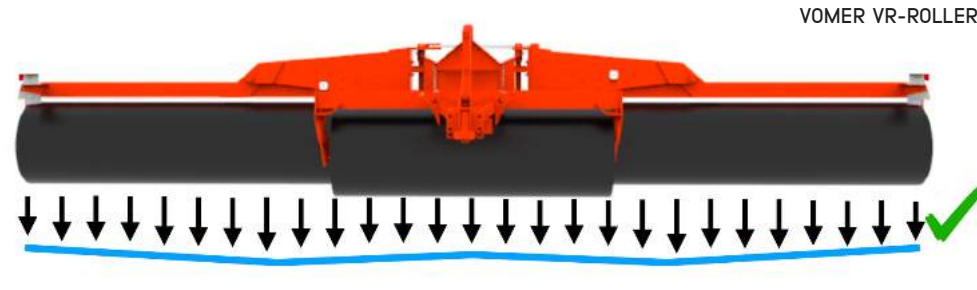
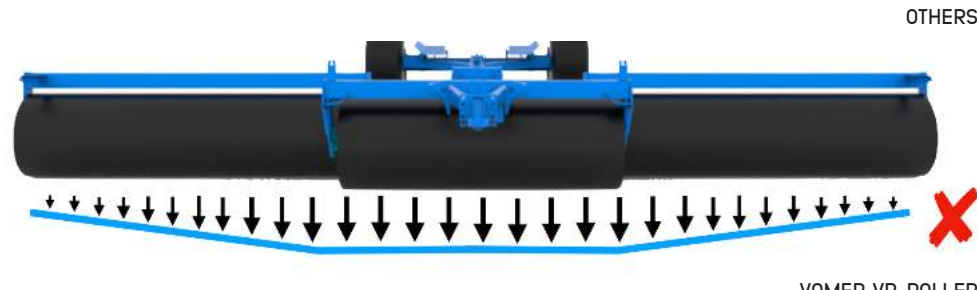
WEIGHT DISTRIBUTION

As indicated, a homogeneous consolidation is fundamental for the growing conditions of all plants, that is why the design of the VR-ROLLER is focused on a good distribution to make uniform pressure on the terrain.

In an analysis of the rollers with hydraulic opening, a V weight distribution is obtained, where the central area supports the majority of the weight, so it over-consolidates in that area increasing also the dragging risk.

The main problem lies in distributing all the weight on the chassis, the wheels and other elements, on the terrain in a homogeneous manner.

Even more, our exclusive SHOX* system makes it for the ideal weight distribution, completely plain.

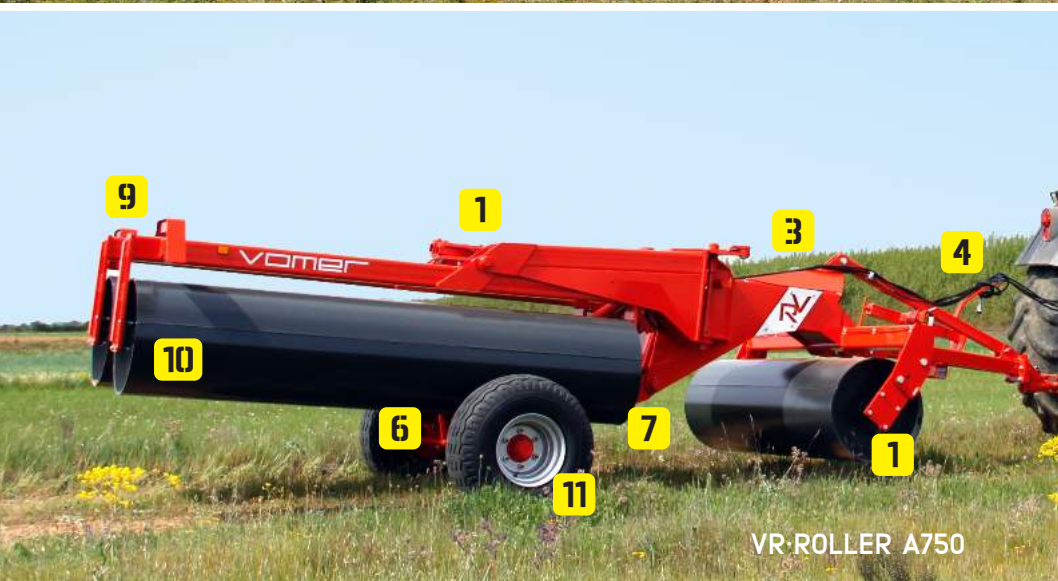


FEATURES VR

- 1. Roller in three oscillating independent bodies, that allow the perfect adaptation to the terrain and without leaving tracks. Oscillating system in the lateral and central bodies.
- 2. Completely hydraulic opening-closing system. Laterals bodies with opening-closing system activated with articulated cranks, which allow a smooth opening and increasing safety when the roller is working. Over-dimensioned opening/closing axis. Interchangeable elements in the opening part, so it can always guarantee the adjustment of the opening even considering wear.
- 3. High resistance frame, robust and compact, with the VR logo in the contrast.
- 4. Drawbar with 3 fastening points and with connection type ISO 20019 and bolt Ø50
- 5. Independent movement of the wheels that allows, in the working position, to raise the roller without closing it. Moreover, the center of gravity is closer to the ground, improving a high stability.
- 6. In the working position no hydraulic cylinder bears any load, which increases the life of this components.
- 7. In the transport position there are no suspended loads and no hydraulic cylinder bears any load, which increases the life of the roller and its components.
- 8. In the working position the roller stays close to the tractor, which facilitates the maneuvering in small enclosures.
- 9. Complete lightning system according to regulations to drive on public roads.
- 10. The universal VR-Roller Frame allows for different compaction elements, such as smooth or flat tubes.
- 11. Tires dimension 400/60 R15,5 or 445/50 R19,5

| | VR.70 | VR.80 | VR.90 | VR.100 | VR.110 |
|---------------------------|---|--------------|---------|---------|---------|
| Working Width (m) | 7,0 | 8,0 | 9,0 | 10,0 | 11,0 |
| Transport Width (m) | 2,50 | 2,50 | 2,50 | 2,95 | 2,95 |
| Cambridge 530 Weight (Kg) | 4200 | 4550 | 4850 | 5850 | 6200 |
| Cambridge 630 Weight (Kg) | 5170 | 5650 | 6000 | 7000 | — — |
| Lateral section support | No | Only in C630 | Si | Si | Si |
| Flat 750 Weight (Kg) | 3830 | 4100 | 4450 | 5180 | 5600 |
| Raptor 750 Weight (Kg) | 4160 | 4500 | 4950 | 5650 | 6100 |
| Linkage ISO 20019 | Bulon Ø50 | | | | |
| Tires | 11.5/80 R15.3 400/60 R15.5 400/60 R15.5 445/50 R19.5* 445/50 R19.5* | | | | |
| Power Demand (HP) | 100-140 | 120-170 | 140-190 | 160-210 | 180-260 |

* Tires 445/50 R19.5 with #100Axel



VR-ROLLER A750

VOMER



HIGH PERFORMANCE
FARMING IMPLEMENTS



Engineered & Factory in León (Spain)
phone +34.987.033.368
www.vomer.es